

SERGE ESSAIAN

**Around the book
Project 3**

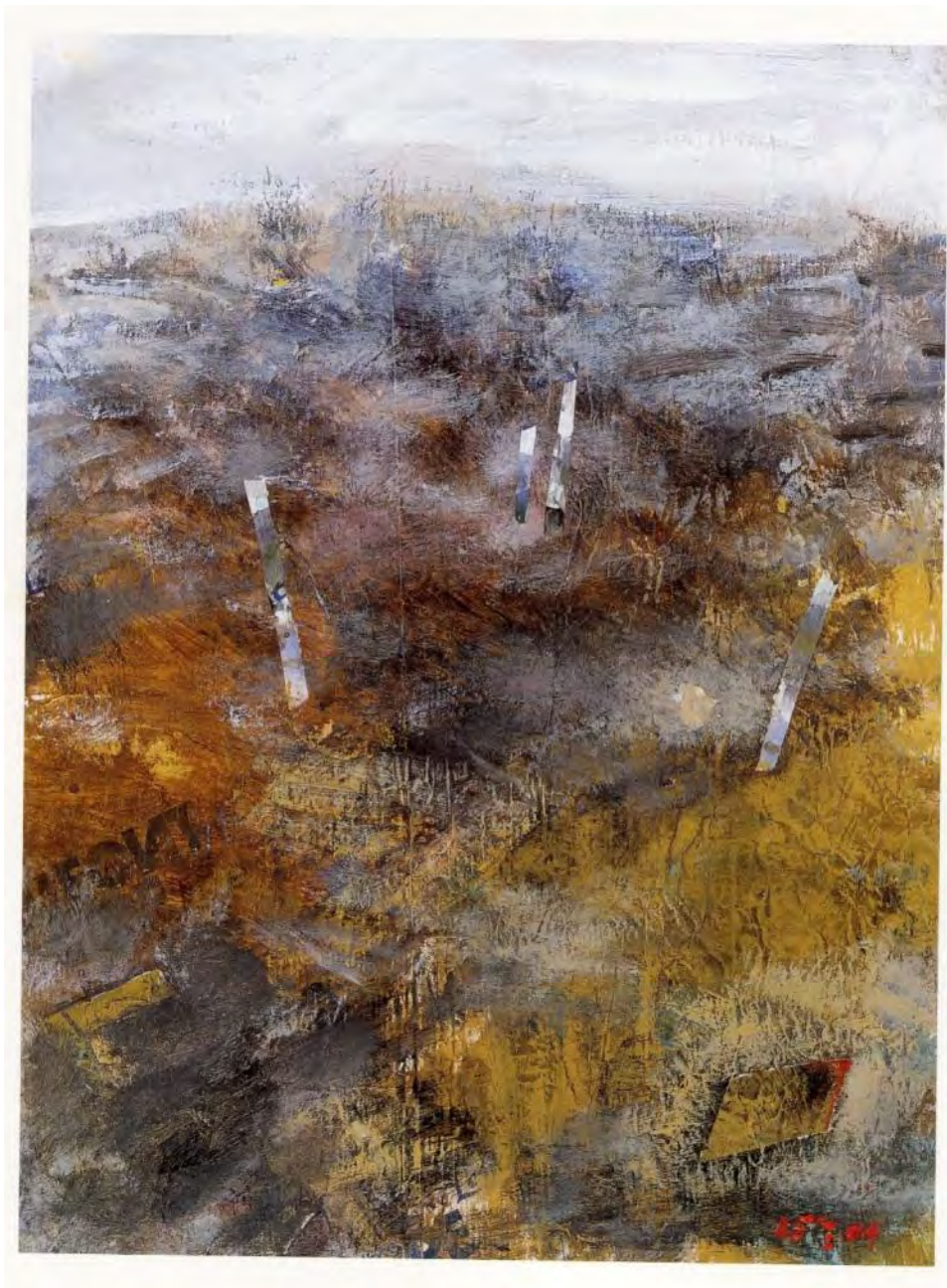
OTHER VIEWS



Autumnal day
Acrylic on canvas
97 cm x 195 cm
Paris. 2004

“Does that mean they're less than landscape? Or not yet landscape?”

No, not really.”



Autumn
Acrylic, water-colour, collage on kraft paper
60 cm x 38 cm
Paris. 2004



Earth

Acrylic, water-colour, collage on kraft paper
41,8 cm x 29,7 cm
Paris. 2004



Building ground I
Acrylic, water-colour on paper
25,5 cm x 25,5 cm
Paris. 2004

“They're simply different, dealing with primeval elements rather than subjects... The earth grows as if from within, meeting the ever-changing sky.”



Mill on a hill
Acrylic, water-colour on card
43 cm x 22 cm
Paris. 2004



Mill on a hill
Fragment



Mill on a hill (Red Earth)
Acrylic, water-colour on card
55 cm x 43 cm
Paris. 2004



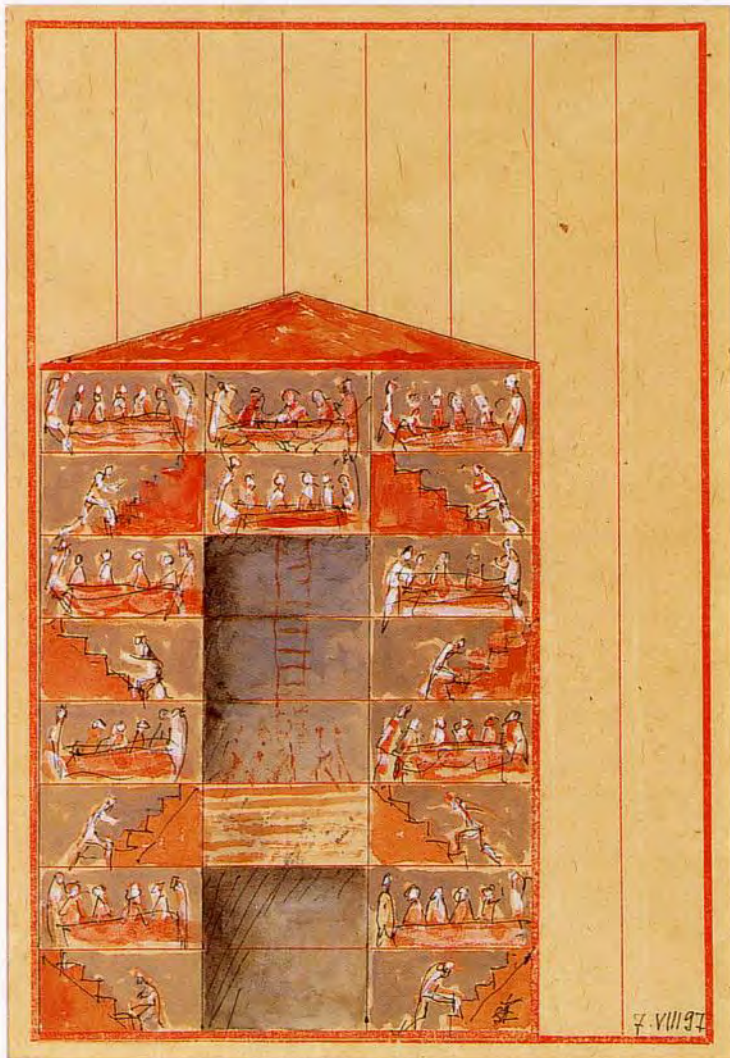
Mill on a hill (Red Earth)
Acrylic, water-colour on card
55 cm x 41,5 cm
Paris. 2004



Mill on a hill
Fragment

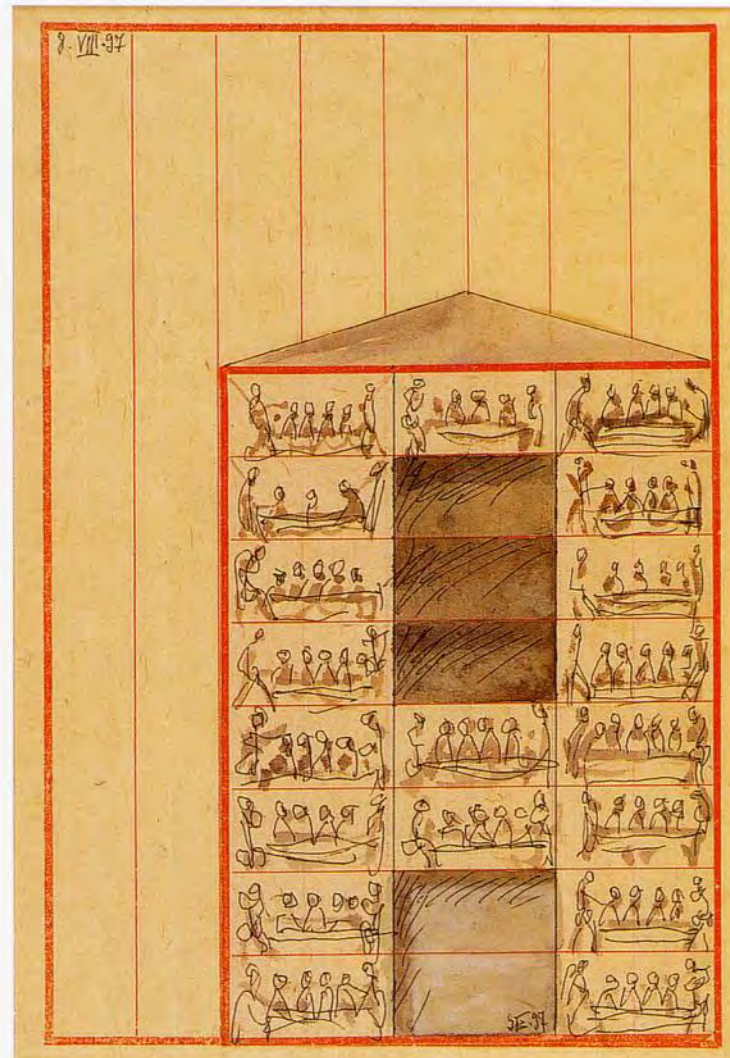
OTHER HOUSES

“We re-visit, or rather revise, the pictorial space abandoned by the avant-garde, who declared it dead almost a century ago.”



Staircase

Pencil, water-color and gouache on Chinese paper
 28,5 cm x 18,3 cm
 Paris. 1997



Dining room

Pencil, water-color and ink on Chinese paper
 28,5 cm x 18,3 cm
 Paris. 1997



Staircase
Fragment



House on a hill
Acrylic, collage on Chinese paper
28,5 cm x 18,3 cm
Paris. 1997

OTHER HUMANS

“Without the walls... without the walls... without the walls...”



Red haired bather

Water-color, ballpoint pen, acrylic on paper
20,7 cm x 14,6 cm
Paris. 2004



Repenting bather

Water-color, ballpoint pen, acrylic on paper
20,7 cm x 14,6 cm
Paris. 2004



Standing in the wind
Water-color, ballpoint pen, acrylic on paper
20,7 cm x 14,6 cm
Paris. 2004



Sunbather 2
Water-color, acrylic on paper
20,7 cm x 14,7 cm
Paris. 2005



Hot spring. Kislovodsk
Water-color, acrylic on paper
28 cm x 16 cm
Paris. 1990



Red bather
Water-color, acrylic on paper
29,5 cm x 21 cm
Paris. 2005



Hot spring. Kislovodsk
Fragment



Red bather
Fragment



Shall I go further?
Water-color, acrylic on paper
25,5 cm x 25,5 cm
Paris. 2005



Shallow water
Water-color, acrylic on paper
25,5 cm x 25,5 cm
Paris. 2005