

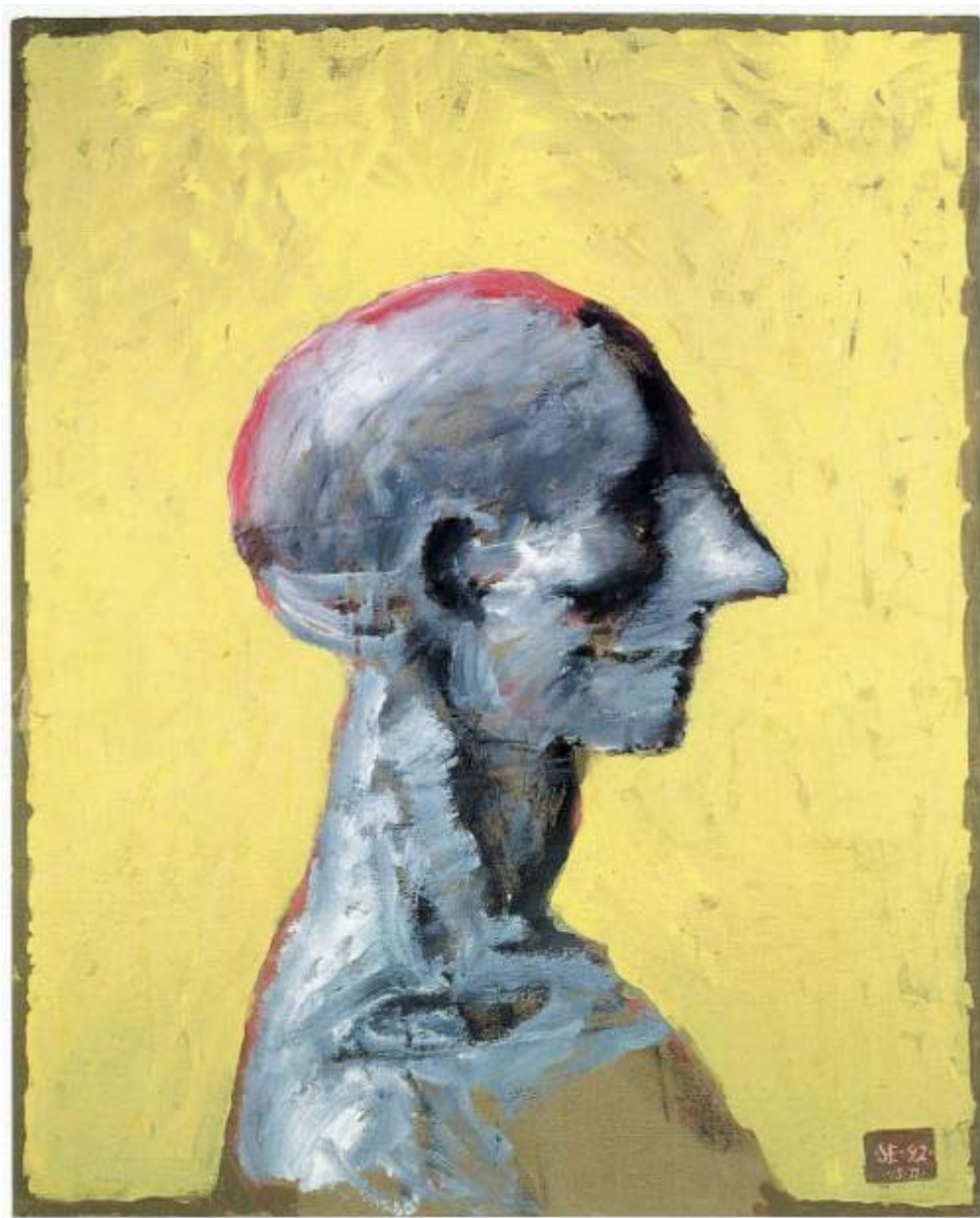
SERGE ESSAIAN

Project 4

HEADS

“In the series "Governors and their concubines" the "Concubines" are numbered, like some geological specimens. The effect is startling, and this idea seems to have led directly to plaster heads. Each head has its own defined space, reminiscent of the frames of a film; the same head looked at repeatedly under the remorseless flashes of a stroboscope.”

Alexandra and Ivan Samarine



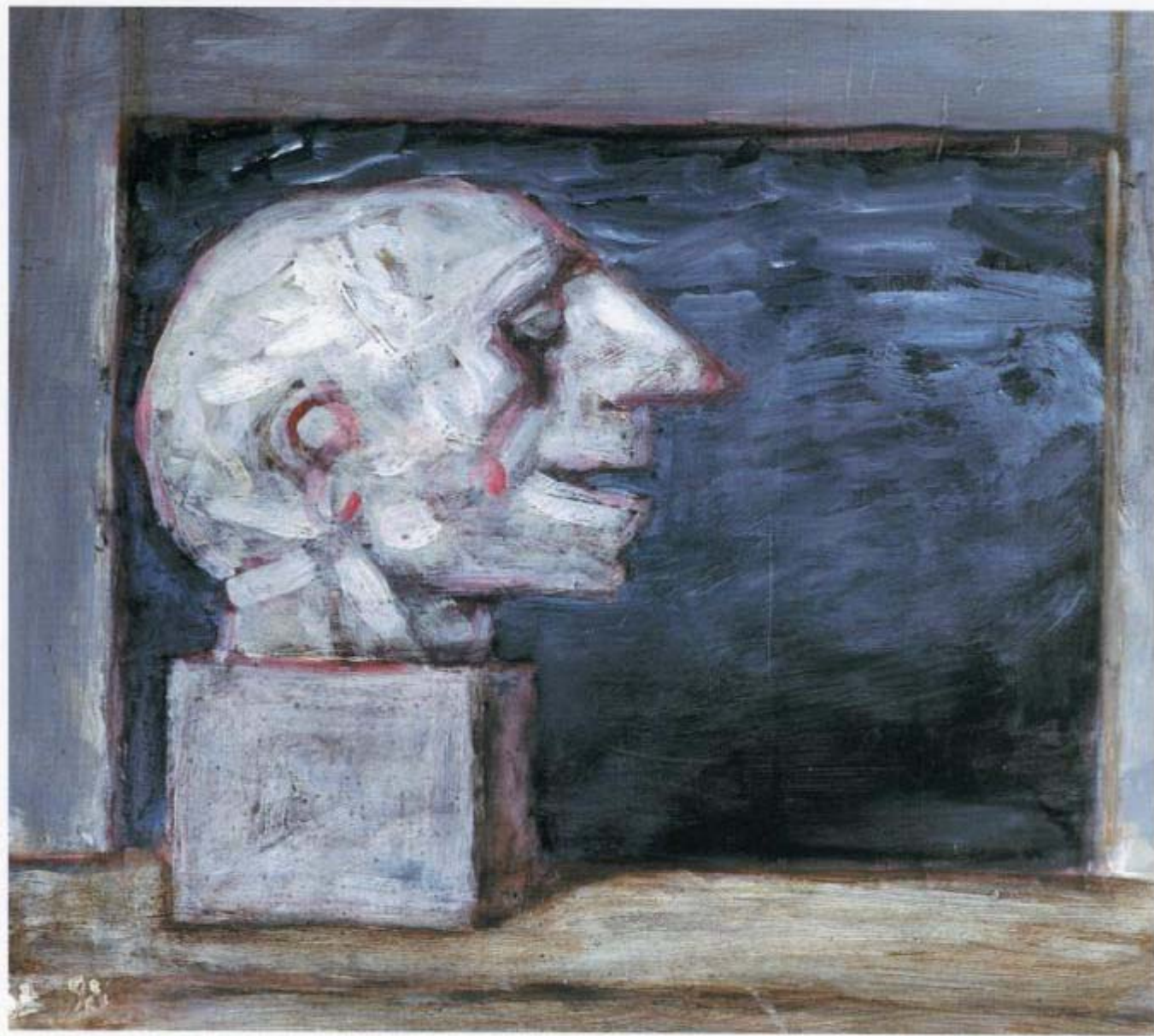
Big head. Acrylic on paper. 100 x 82 cm. Paris. 1992



Evening. Acrylic, collage on wood. 151,5 x 121,5 cm. Paris. 1998



Room 2. Acrylic and collage on plywood .121 x 120 cm. Paris. 1999



Head against the window, night. Acrylic on paper. 42,5 x 46,5 cm. Paris. 1998



Head against the sky. Acrylic on card. 30 x 40 cm. Paris. 1998



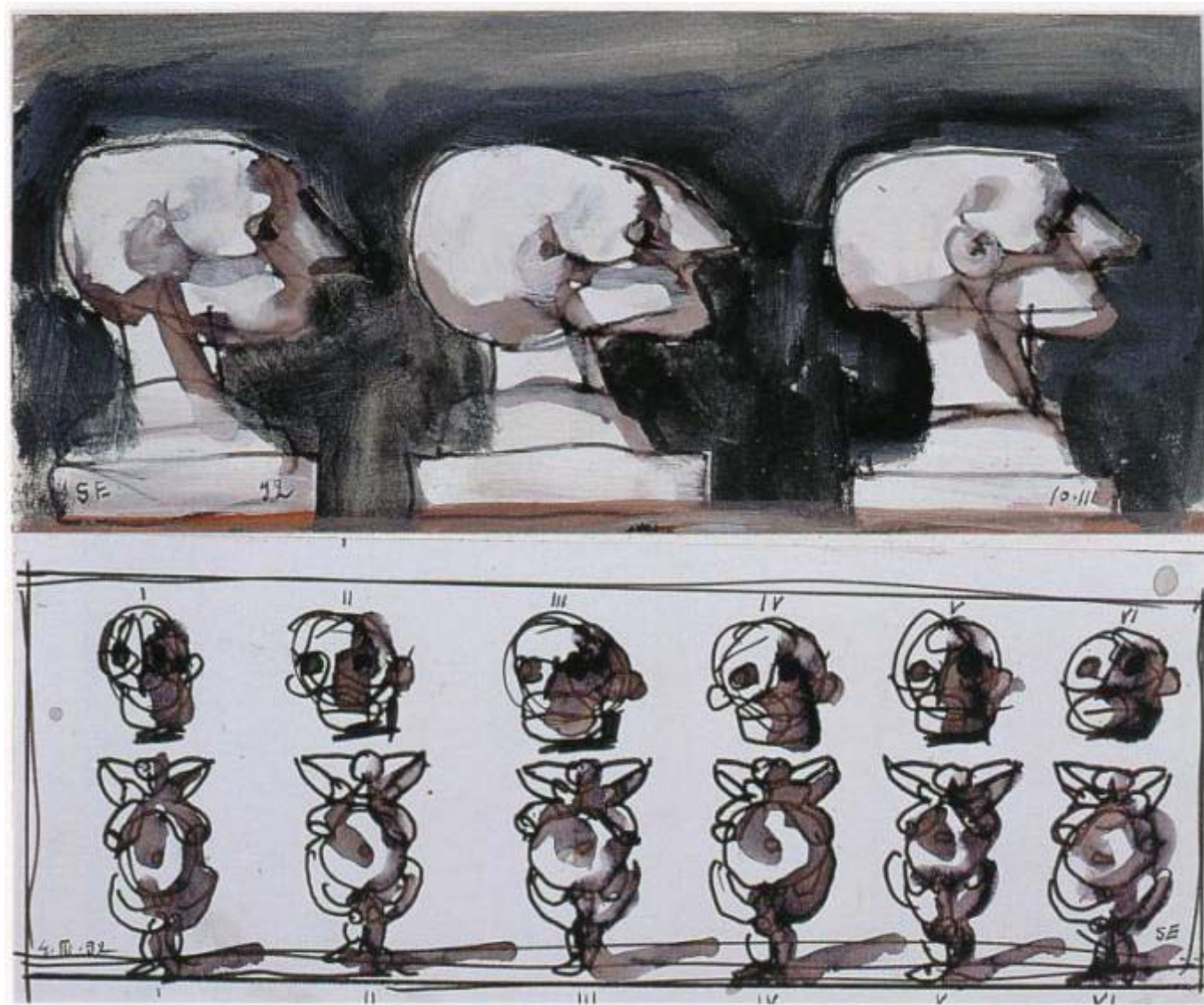
Head of the Motte Beuvron forest. Acrylic and collage on card. 34 x 57 cm. Paris. 1998



Head of an ecorché. Acrylic on card. 34 x 57 cm. Paris. 1998



In the studio. Acrylic on paper. 30,5 x 33 cm. Paris. 1998



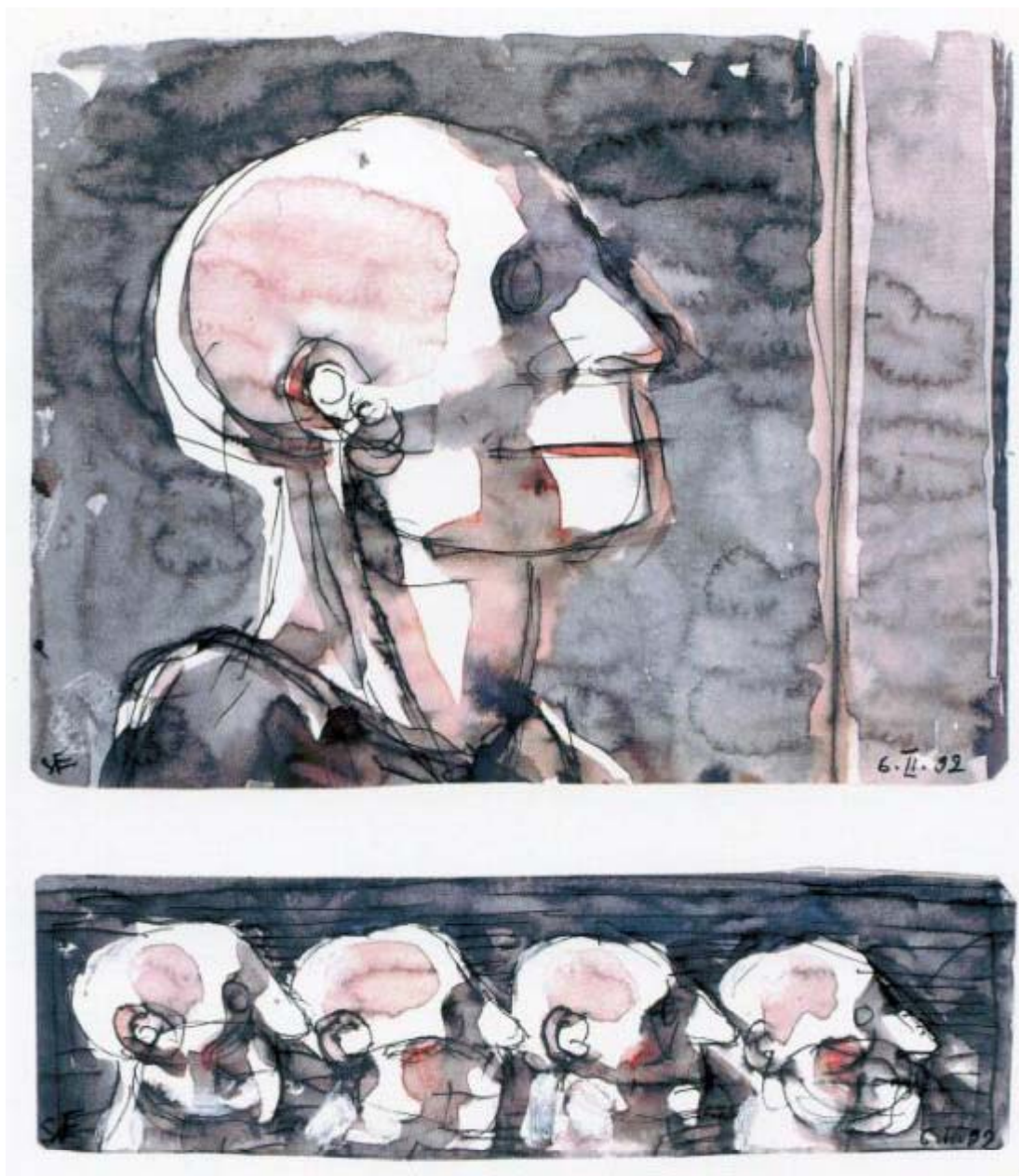
Three plaster heads, six governors and their concubines. Acrylic, pen, ink and collage on paper. 24,5 x 29 cm. Paris. 1992



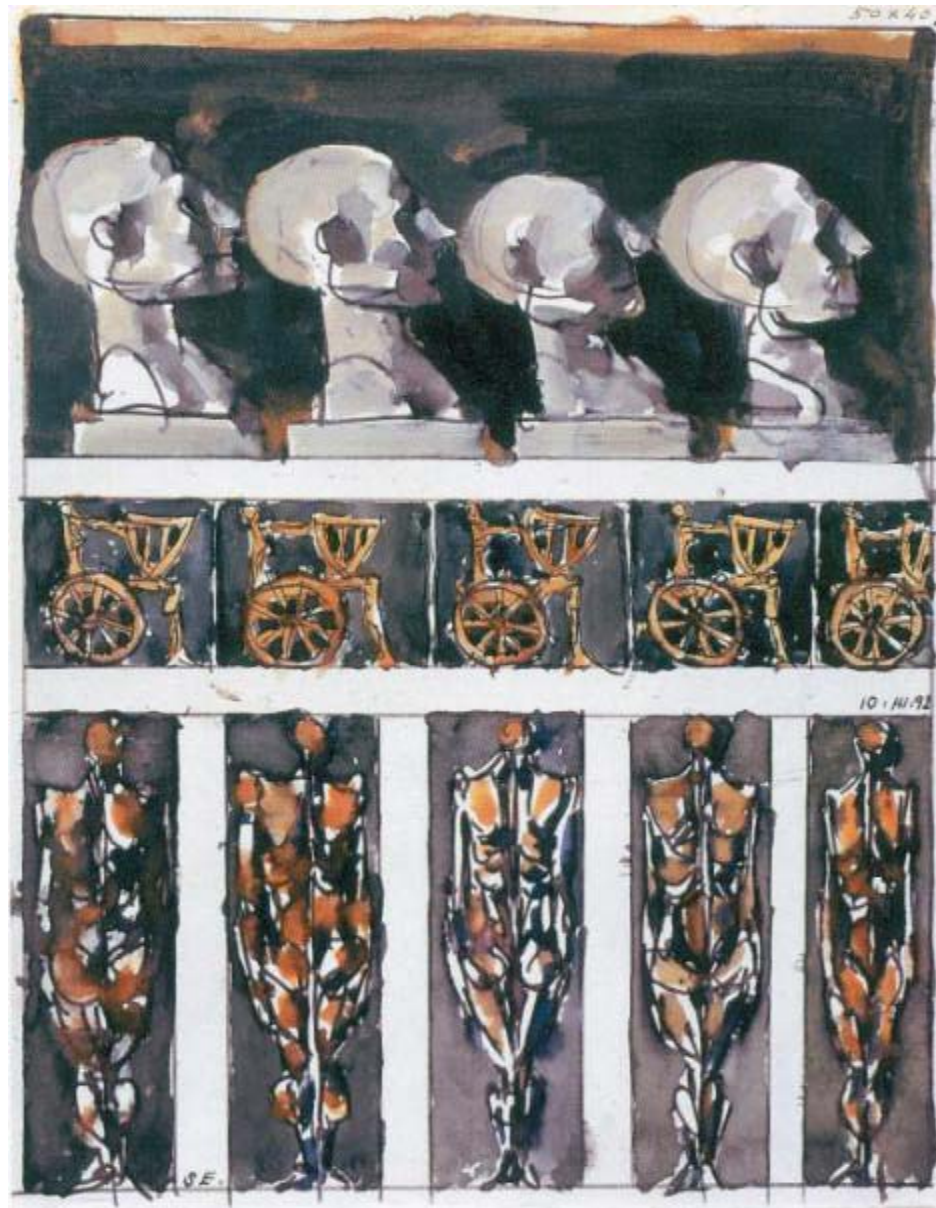
Waist and four heads. Water-color, acrylic, pen, ink and collage on paper. 19 x 14 cm.
Paris. 1992



Family album. Water-color, acrylic, pen, ink and collage on paper. 19 x 9,5 cm. Paris. 1992



Five heads. Water-color, acrylic, pen, ink and collage on paper. 25,3 x 25,2 cm. Paris. 1992



Four plaster heads, poets and body guards. Water-color, acrylic, pen, ink and felt on paper.
32,5 x 25,2 cm. Paris. 1992



Three heads, body guards and anglets. Water-color, acrylic and felt on paper. 36 x 17 cm. Paris. 1992



Bronze and plaster. Acrylic, clay relief on wood medium. 43 x 140 x 6,5 cm. Paris. 1999



Male head. Bronze, lost wax. 65 x 31 x 42 cm. Paris. 1996-98



L Astronomer. Detail. Wood sculpture. 195 cm. Paris. 1997